



# SLOW-MOTION LANDSLIDE

## could prove costly for road

Photos by Tom Cherveney / Tribune  
The Minnesota Department of Transportation closed Highway 67 east of the entrance to the Upper Sioux Agency State Park in late March due to the fissures that expanded.

## Minnesota Highway 67 closed southeast of Granite Falls

**By Tom Cherveney**  
tcherveney@wctrib.com

**Upper Sioux Agency State Park** – If you’re looking for a place to stand your ground, don’t pick this portion of Minnesota Highway 67 near the Upper Sioux Agency State Park, southeast of Granite Falls.

The ground is moving, with costly implications for the Minnesota Department of Transportation and possibly the state park.

Movement that is occurring many feet below the road surface has caused the pavement to fracture, with jagged fissures and as much as two-feet of grade separation. “Like an earthquake zone,” one observer described it.

MnDOT has closed this portion of the road, from a short distance east of the main entrance to the state park to the bridge over the Yellow Medicine River, since late in March.

The movement is affecting a broader area. It’s causing fissures and shifting that is affecting trails and a gravel road to the state park’s campground along the Yellow Medicine River.

“Unfortunately, we don’t have a lot of answers right now what the fix will be or how long it will take,” said Cody Brand, a materials engineer with MnDOT in Willmar.

MnDOT needs to determine where the underground fault

plane causing the movement is before it can develop a plan to address it, and that will take some time, he explained.

MnDOT is in the process of drilling three bore holes. Each will hold sensors able to record the amount of movement occurring, and at what depth. The first boring is about 90 feet deep.

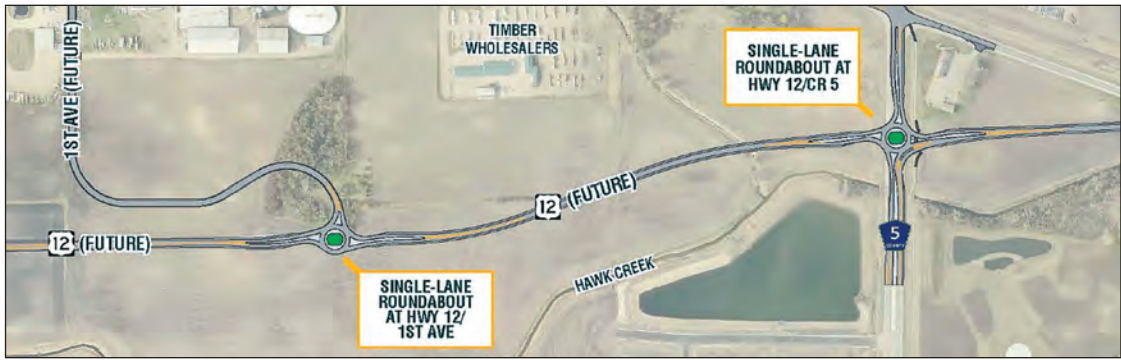
The department has also conducted electrical resistivity studies to identify the properties of the subsurface materials.

The movement in this area has been occurring for years. Wet conditions in the past year likely accelerated it, as well as

**HWY 67:** Page A2



The Minnesota Department of Transportation is in the process of boring electronic sensors into the subsurface at three sites along the shifting earth under state Highway 67 east of the Upper Sioux Agency State Park entrance.



Submitted by Bolton and Menk / Hoffman Construction

Two roundabouts are being proposed for the new section of U.S. Highway 12 that will be constructed as part of the Willmar Wye project. Bolton and Menk, part of the Hoffman Team designing and constructing the road portion of the wye project, presented these designs to the Willmar City Council and Kandiyohi County Board on the roundabouts.

## New Highway 12 roundabouts approved by Willmar and Kandiyohi County

**Roundabouts are part of updated design of Willmar Wye project**

**By Shelby Lindrud**  
slindrud@wctrib.com

WILLMAR – Travelers who will use the redesigned U.S. Highway 12 on the west side of Willmar as part of the

Willmar Wye project will have a bit of cylindrical route once construction is completed.

Bolton and Menk, part of the Hoffman Team hired by the Minnesota Department of Transportation to design and build the road portion of the Willmar Wye project, has proposed constructing

two roundabouts on the new section of Highway 12, both as a cost savings and safety measure.

MnDOT conditionally approved the plan as long as the city and county did. Both the Willmar City Council and

**WYE:** Page A2

## Kids take center stage leading up to Governor’s Fishing Opener

**By Steve Hoffman**  
Forum News Service

ALBERT LEA — On Saturday, May 11, the focus on Fountain Lake will be the Governor’s Fishing Opener. But on Friday, the lake belonged to kids.

“Who knows what kind of fish that is,” Brandon Eder asked a group of area fifth graders as he pointed to black crappie swimming in an acrylic aquarium. Several hands shot up and the students began to chatter about the various fish species they have caught.

Eder is the Assistant Fisheries Supervisor in the Waterville Area for the Minnesota DNR. His aquarium contained a mix of crappies, sunfish, bass and pike sampled from area lakes.

He also showed the kids a wading pool that contained an assortment of bullheads, bass and a lone bowfin. “See how different their skin feels?” Eder asked. “The bullheads are smooth because they don’t have scales, but bass and sunfish do.”

At the next station, DNR Area Fisheries Supervisor Craig Soupir explained how fisheries personnel use nets to sample fish from lakes and rivers.

“Once we’re able to establish how many fish are in a lake, we can make decisions about how to improve the population,” he said. “Most of the time, that means stocking small fish that will one day be big enough for you to catch.”

A DNR stocking truck arrived carrying precious cargo: more than 50,000 walleye fry and approximately 1,000 fingerlings. DNR Fisheries Specialist Sky Wigen scooped the fingerlings from a large holding tank then passed the net to excited students. His volunteers hurried down to the fishing pier to release the young fish into Fountain Lake.

“We usually only stock walleye fingerlings in the fall on this lake,” Wigen said. “You guys are really helping us out.”

**OPENER:** Page A2

Prairie’s Edge  
CASINO RESORT

5616 Prairies Edge Lane  
Granite Falls, MN  
www.prairiesedgecasino.com



Lutefisk Buffet

May 16 | 4:00 pm - 9:00 pm

Featuring all-you-can-eat Lutefisk, carved beef, Karbonader, Swedish meatballs, lefsa, and much more.

\$14.95

Due to our Seafood Buffet held on the third Friday of each month; we will be offering our Syttende Mai buffet a day early!



Seafood Buffet

May 17 | Noon - 10:00 pm

Featuring all-you-can-eat crab legs, jumbo shrimp cocktail, shrimp scampi, fish, variety of entrees and much more.

\$28.95

HOTEL | RV PARK | GAMING | RESTAURANTS | CONVENTION CENTER ♦ VOTED BEST CASINO FOR THE 6TH YEAR

WEATHER  
OPINION

A2 FARM  
A4 OBITUARIES

A5 SPORTS  
A6 CLASSIFIEDS

B1 EXTRA  
B4 COMICS

C1  
C3

wctrib.com

  
7 85186 00141 5



